



Launching EMC Education

1. Enter <https://education.emc.com> in the web browser
2. Click **Customer/Partner Login** - located in upper right corner (*screen not shown*)
3. Click **Customers and Partners register here (Instructions)**

Step 1 – Register for an EMC Account

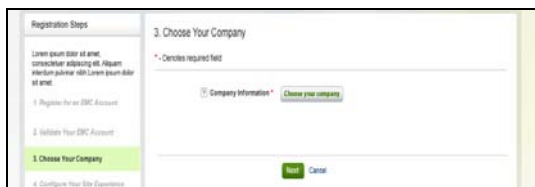
1. Complete the **Personal Information** fields
2. Complete the **Login Information** fields
3. Select a **Challenge Question** from both drop-down lists and enter the **Answer** to the question in the field below
4. Enter the security code displayed in the box below
5. Click **Next**
 - A validation code will be sent to the email address entered

Step 2 – Validate Your EMC Account

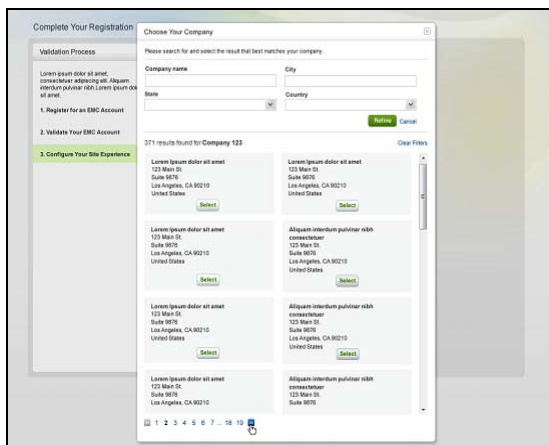
1. Enter the **Validation code**
2. Enter your **Password**
3. Click the **Terms of Use** link to open/read the Terms and Conditions and click the checkbox to **agree to the Terms of Use**
4. Click **Next**
 - If a single company profile match is found, you will be redirected to the Powerlink home page (If you are not redirected, click **Continue to the EMC Powerlink**)
 - If no company matches or multiple company matches are found, you will be directed to **Choose a Company** (*See 3a - Multiple Company Matches or 3b - No Company matches*)



Step 3a – Choose Your Company: Multiple Company Matches

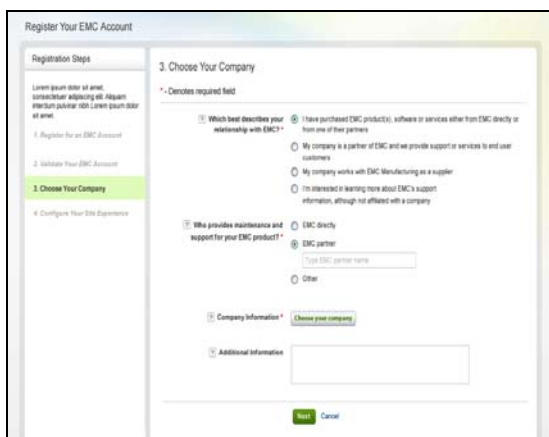


1. Click **Choose Your Company**
2. Enter the **Search** criteria necessary to refine the search results and locate the company profile you wish to select
3. Click **Refine**
4. Click **Select**

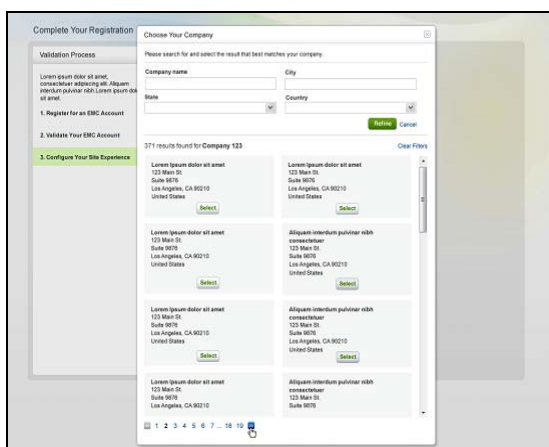


- The company location does not need to match your location – choose the closest match. It will not affect your access to Powerlink
5. Return to the **Choose Your Company** page and the selected company will display in the **Company Information** field
 6. Click **Next** (screen not shown)
 - You will receive a “Registration Complete” message and you will be redirected to the Powerlink home page (if you are not redirected, click **Continue to EMC Powerlink**)

Step 3b – Choose Your Company: No Company Matches



1. Select the option **which best describes your relationship with EMC**
2. Depending on your selection, you will be presented with follow-up questions
3. Click **Choose Your Company**
4. Enter the **Search** criteria necessary to refine the search results and locate the company profile you wish to select
5. Click **Refine**

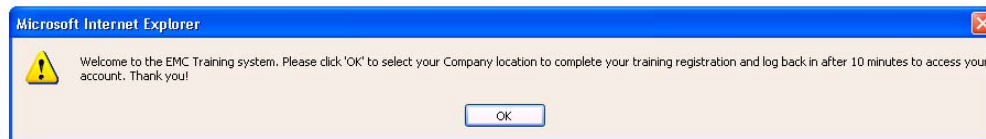


- Click the **Submit Your Company Information** link to manually enter company information (if not found in search results list) and click **Done** to submit (*Skip Steps 6-7 if company information is manually entered*)
6. Click **Select**
 - You will return to the **Choose Your Company** page and the selected company will display in the **Company Information** field
 7. Click **Next** (screen not shown)
 - You will receive a “Registration Complete” message and you will be redirected to the Powerlink home page (if you are not redirected, click **Continue to the EMC Powerlink**)

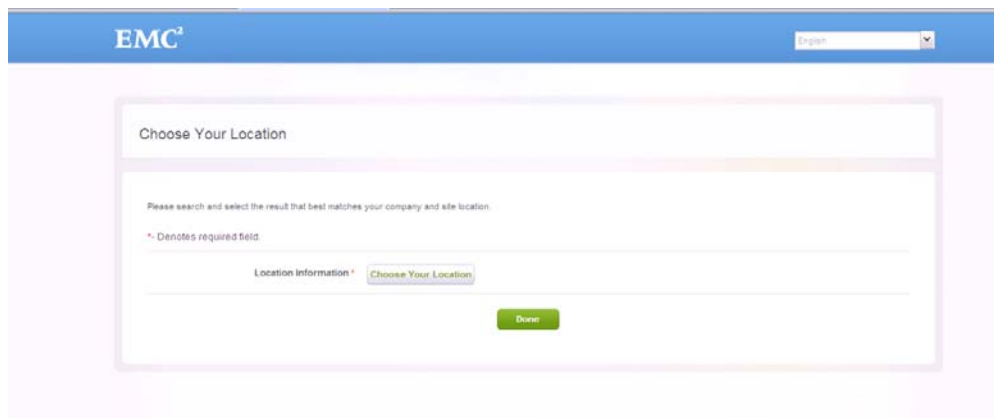


First Time Access of Education Services Website

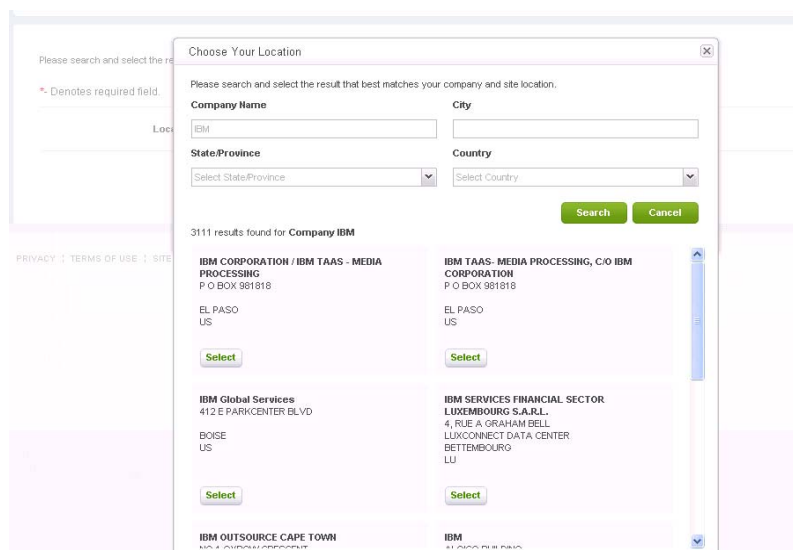
1. When the authentication process determines a user is new, the below message is presented. Click 'OK' and you will be redirected to enterprise Select Location page



2. Select your Company Location



3. Enter the Location value (e.g. IBM) and select Location > click Select





4. Location selected displayed > click Done

EMC² English

Choose Your Location

You have selected the location below. Click done to save your selection.

* Denotes required field.

Location Information * IBM TAAS- MEDIA PROCESSING, C/O IBM CORPORATION
P.O. BOX 981818
EL PASO
US

Change Company

Done

PRIVACY | TERMS OF USE | SITE HELP AND FEEDBACK

5. You will be redirected to the Education Services Guest page until your location details are added to your record in the registration system. This occurs every 10 minutes

EMC² where information lives[®] Education Services Customer / Partner Login

Home Training Certification Support Other EMC Sites

EMC Proven Professional Impact
Value of EMC Proven Professional training and certification realized by EMC Customers, Partners, and Industry Professionals.
Learn More »

VMware courses, available from EMC
Drive pervasive server virtualization initiatives. Integrate and optimize existing virtualized server/application environments with EMC's array-based replication technologies.
Learn More »

LOGIN NOW

- Search, purchase and register for courses
- Activate your purchased training
- Access enrolled eLearning courses
- Don't have a login? [New user Registration](#) »

News & Updates

Training

- » Managing Storage: *Trends, Challenges, and Options (2010-2011)* (Whitepaper)
- » The Proven Professional Certification – Proving Certification Can Profit
- » Eliminating the Storage Skills Gap (ESG) Whitepaper or Video
- » The Efficient, Green Data Center (Whitepaper)

More Training News »

Welcome to EMC Education Services.

Information Storage and Management »
Not sure where to begin? Start here!
Industry leading information storage 'open' course that covers all segments of technologies from network storage to data security and virtualization.

EMC Technology Specific Training »
Need to learn new and updated EMC products and technologies?
Comprehensive coverage for all segments of EMC technologies. Leverage extensive capabilities of EMC solutions.

EMC Proven Professional Certification

Featured Training!

VPLEX
Expand your understanding of VPLEX with our two **FREE** e-Learning courses [Take a look](#) »

CLARiION FLARE 30 and Unisphere Differences
Provides participants with a broad overview of the new functionality available in the CLARiION FLARE 30 and Unisphere Manager release.
[View Full Details](#) »