



Build Stick Instructions

for Version 11.x



Copyright © 1994-2018 Dell Inc. or its subsidiaries. All Rights Reserved.

Contact Information

RSA Link at <https://community.rsa.com> contains a knowledgebase that answers common questions and provides solutions to known problems, product documentation, community discussions, and case management.

Trademarks

For a list of RSA trademarks, go to www.emc.com/legal/emc-corporation-trademarks.htm#rsa.

License Agreement

This software and the associated documentation are proprietary and confidential to Dell, are furnished under license, and may be used and copied only in accordance with the terms of such license and with the inclusion of the copyright notice below. This software and the documentation, and any copies thereof, may not be provided or otherwise made available to any other person.

No title to or ownership of the software or documentation or any intellectual property rights thereto is hereby transferred. Any unauthorized use or reproduction of this software and the documentation may be subject to civil and/or criminal liability.

This software is subject to change without notice and should not be construed as a commitment by Dell.

Third-Party Licenses

This product may include software developed by parties other than RSA. The text of the license agreements applicable to third-party software in this product may be viewed on the product documentation page on RSA Link. By using this product, a user of this product agrees to be fully bound by terms of the license agreements.

Note on Encryption Technologies

This product may contain encryption technology. Many countries prohibit or restrict the use, import, or export of encryption technologies, and current use, import, and export regulations should be followed when using, importing or exporting this product.

Distribution

Dell believes the information in this publication is accurate as of its publication date. The information is subject to change without notice.

March 2018

Contents

Create Host Build Stick	4
Resources Required	4
Automated Tool to Create Build Stick	4
Build Stick Installation Media	4
NetWitness Suite ISO Files	4
Create a NetWitness Suite USB Build Stick	5
Revision History	8

Create Host Build Stick

These instructions tell you how to image an RSA NetWitness Suite host with the NetWitness Suite software image.

Resources Required

You need the following tools to complete these instructions.

- Automated tool to create a build stick [for example Universal Netboot (UNetbootin) installer tool]
- NetWitness Suite USB file
- USB drive with 8GB capacity

Automated Tool to Create Build Stick

You can use an automated tool to create the build stick. The UNetbootin tool is used in the examples in this document.

Note: Make sure that you have all of the resources listed above before starting the process.

Build Stick Installation Media

Installation media is in the form of ISO files, which are available for download from Download Central (<https://download.rsasecurity.com>). As part of your order fulfillment, RSA gives you access to the ISO files that pertain to each customer order.

NetWitness Suite ISO Files

The `rsa-<release number>.<build-number>.<OS number>-usb.iso` is the file naming convention for ISO files. When installing software on your NetWitness Suite host, make sure you are using the correct release. This document uses `rsa-11.x.x.x.<build-number>.el7-usb.iso` as an example of an ISO file.

Contact Customer Care at nwsupport@rsa.com for assistance.

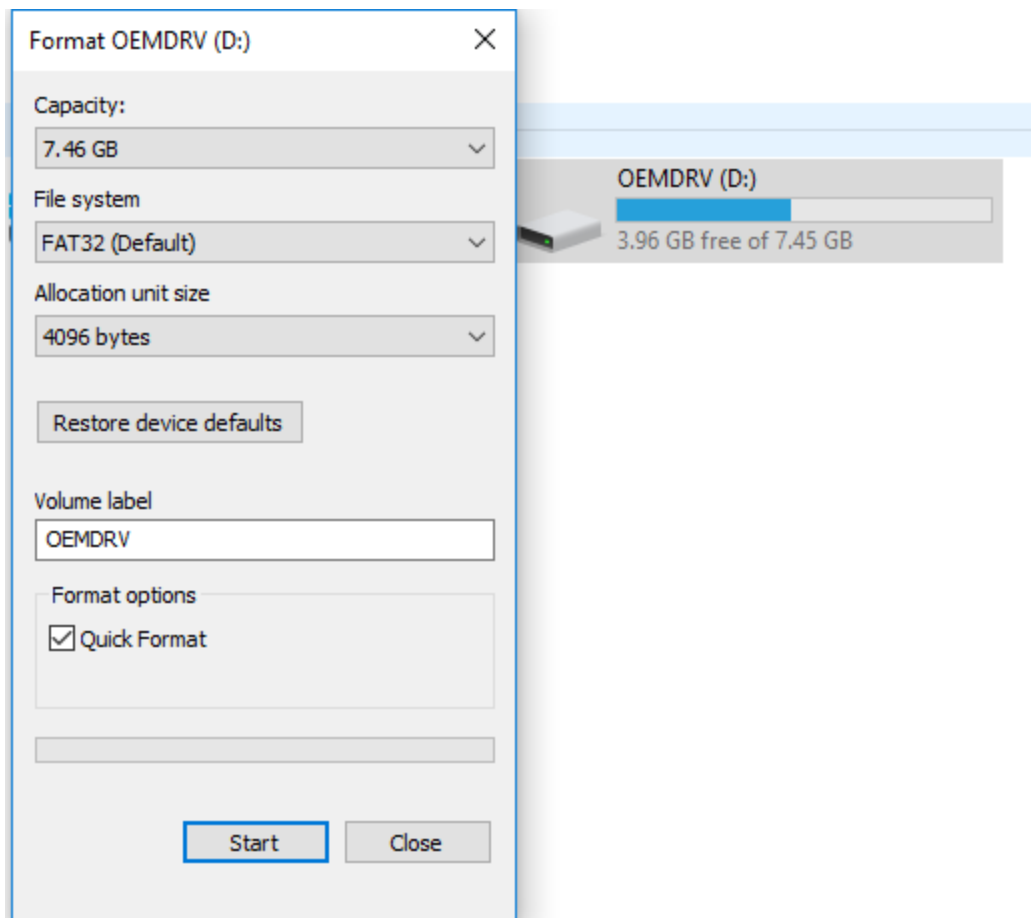
Create a NetWitness Suite USB Build Stick

Note: You must use a USB drive that is 8GB or larger and is formatted as FAT32.

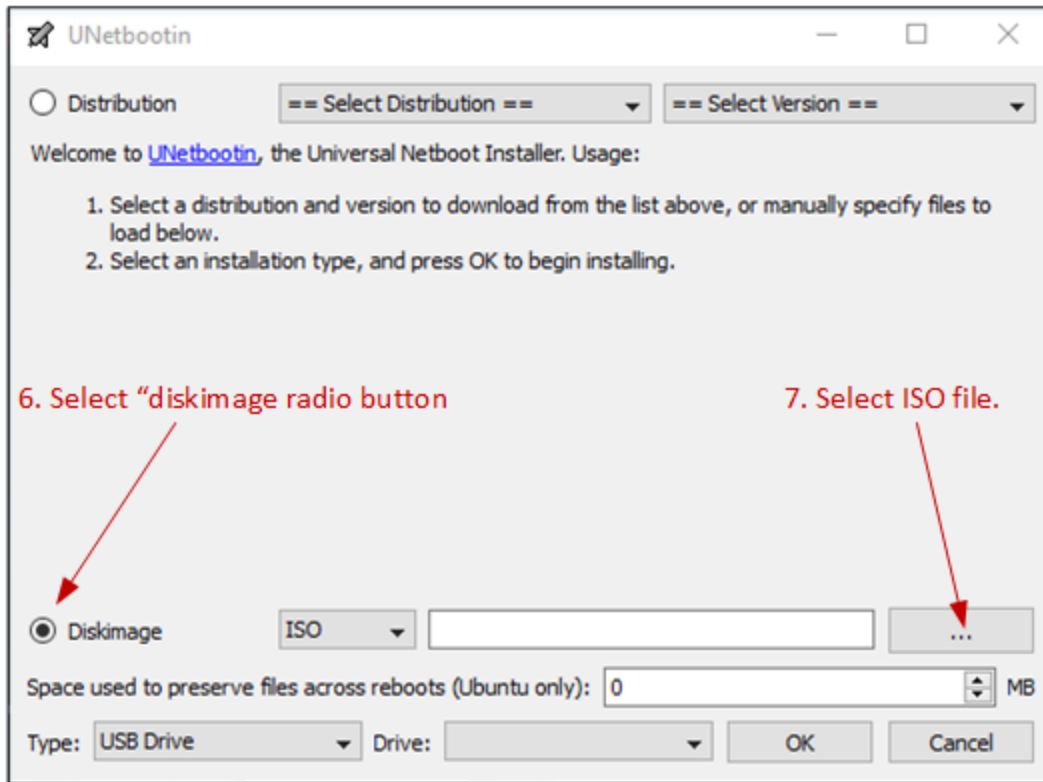
These instructions tell you how to create a USB "build-stick" to load the operating system and NetWitness Suite software onto your NetWitness Suite host.

Caution: All existing data on the USB drive will be destroyed.

1. Insert the USB drive that you will use as the build stick.
2. Format the USB drive.
 - a. In Microsoft Windows Explorer, go to "**This PC**" for Windows 10 or **Computer** for older Windows Operating Systems.
 - b. Right click the USB device, and click **Format**.
 - c. In the format menu, make sure that your drive has **OEMDRV** for the **Volume label**, check the **Quick Format** checkbox, and click **Start**.

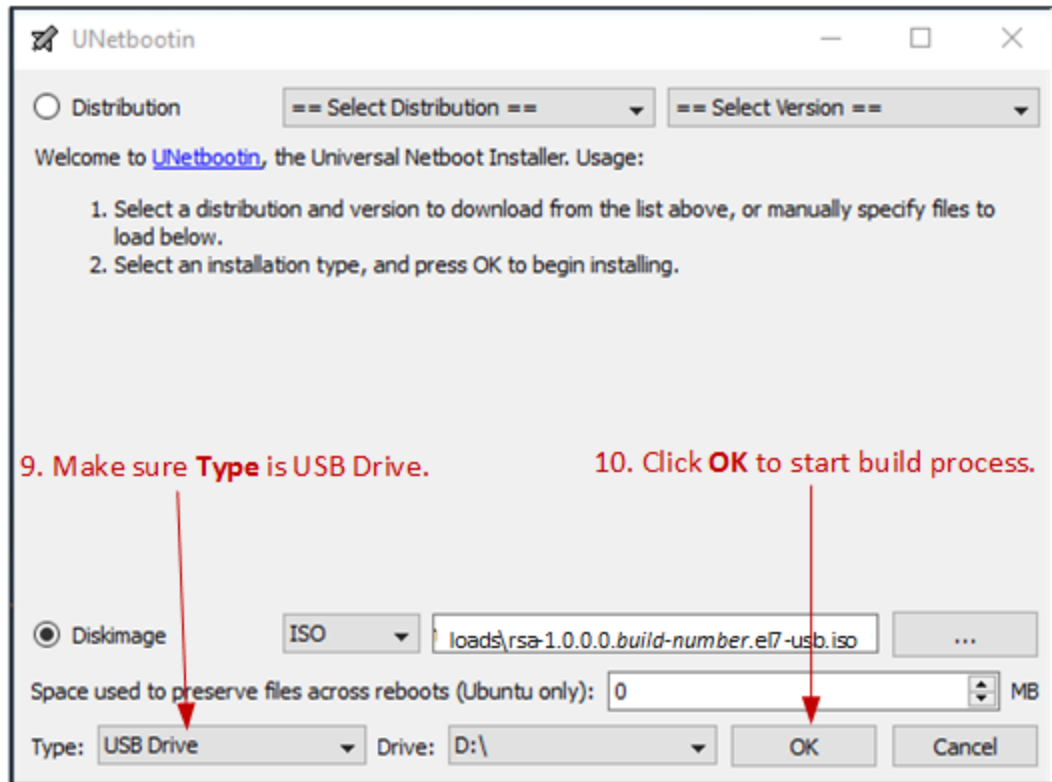


3. Download the NetWitness Suite USB ISO image.
4. Download an automated tool to create a build stick (for example UNetbootin).
5. Launch the tool.



6. Select the **Diskimage** radio button.
7. Select the appropriate version of the NetWitness Suite ISO by clicking on ... and navigating to the ISO file in your Local directory (for example, **C:/temp/rsa-11.x.x.x.<build-number>.el7-usb.iso**).

8. Highlight the usboot file and click **Open** to select the ISO file.



9. Confirm the **Type** is set to USB Drive and the **Drive** is set to the appropriate USB drive.
10. Click **OK** to start the build process.
11. After the process completes, **Exit** to complete the automated file extraction. (Do not click **Reboot Now** unless you want to reboot your Windows computer.)
12. Go to My Computer, right click **USB** and click **Safely Remove or Eject**.
13. After the USB drive is ejected, unplug the USB device.
The bootable USB is now ready.

Revision History

Revision	Date	Description	Author
1.0	8-Mar-18	Release to Operations (RTO)	IDD