



# USB Build Stick Instructions for ISO

for RSA NetWitness® Platform 11.3.0.2 and Later



Copyright © 1994-2019 Dell Inc. or its subsidiaries. All Rights Reserved.

## **Contact Information**

RSA Link at <https://community.rsa.com> contains a knowledge base that answers common questions and provides solutions to known problems, product documentation, community discussions, and case management.

## **Trademarks**

For a list of RSA trademarks, go to <https://www.rsa.com/en-us/company/rsa-trademarks>.

## **License Agreement**

This software and the associated documentation are proprietary and confidential to Dell, are furnished under license, and may be used and copied only in accordance with the terms of such license and with the inclusion of the copyright notice below. This software and the documentation, and any copies thereof, may not be provided or otherwise made available to any other person.

No title to or ownership of the software or documentation or any intellectual property rights thereto is hereby transferred. Any unauthorized use or reproduction of this software and the documentation may be subject to civil and/or criminal liability.

This software is subject to change without notice and should not be construed as a commitment by Dell.

## **Third-Party Licenses**

This product may include software developed by parties other than RSA. By using this product, a user of this product agrees to be fully bound by terms of the license agreements applicable to third-party software in this product.

## **Note on Encryption Technologies**

This product may contain encryption technology. Many countries prohibit or restrict the use, import, or export of encryption technologies, and current use, import, and export regulations should be followed when using, importing or exporting this product.

## **Distribution**

Dell believes the information in this publication is accurate as of its publication date. The information is subject to change without notice.

September 2019

# Contents

---

- Create Host Build Stick ..... 4**
  - Resources Required ..... 4
  - Build Stick Installation Media ..... 4
  - NetWitness Platform ISO Files ..... 4
  - Create a NetWitness Platform USB Build Stick ..... 5
  - Reinstate Windows File System on USB Device after Creating Build Stick with Etcher ..... 8
- Revision History ..... 12**

---

## Create Host Build Stick

---

These instructions tell you how to apply a NetWitness Platform software image (ISO file) to a thumb drive so you can image an RSA NetWitness Platform host with the NetWitness Platform software image.

**IMPORTANT:** You no longer need to label the flash drive when imaging RSA NetWitness Platform 11.3.0.2 and later ISO files to the flash drive (USB medium). The 11.3.0.2 ISO requires an imaging tool [for example, **ETCHER** (<https://etcher.io>)] to write to a flash drive. For the 11.0 - 11.2 ISO files, you were required to format and label the flash drive. UNetbootin does not work with 11.3.0.2 and later ISOs.

## Resources Required

You need the following tools to complete these instructions.

- Automated tool to create a build stick [for example ETCHER (<https://etcher.io>)].
- Automated tool to reinstate the Windows file system on USB Device after you create the build stick [For example, Minitool Partition Wizard (<http://download3.minitool.com/10.2.2/pw102-free.exe>)].
- NetWitness Platform USB ISO file.
- USB drive with capacity sufficient enough to accommodate the NetWitness Platform ISO file.

**Note:** Make sure that you have all of the resources listed above before starting the process.

## Build Stick Installation Media

Installation media is in the form of ISO files, which are available for download from Download Central (<https://download.rsasecurity.com>). As part of your order fulfillment, RSA gives you access to the ISO files that pertain to each customer order.

## NetWitness Platform ISO Files

The `rsa-<release number>.<build-number>.<OS number>-usb.iso` is the file naming convention for ISO files. When installing software on your NetWitness Platform host, make sure you are using the correct release. This document uses `rsa-11.x.x.x.<build-number>.el7-usb.iso` as an example of an ISO file.

Contact Customer Care at [nwsupport@rsa.com](mailto:nwsupport@rsa.com) for assistance.

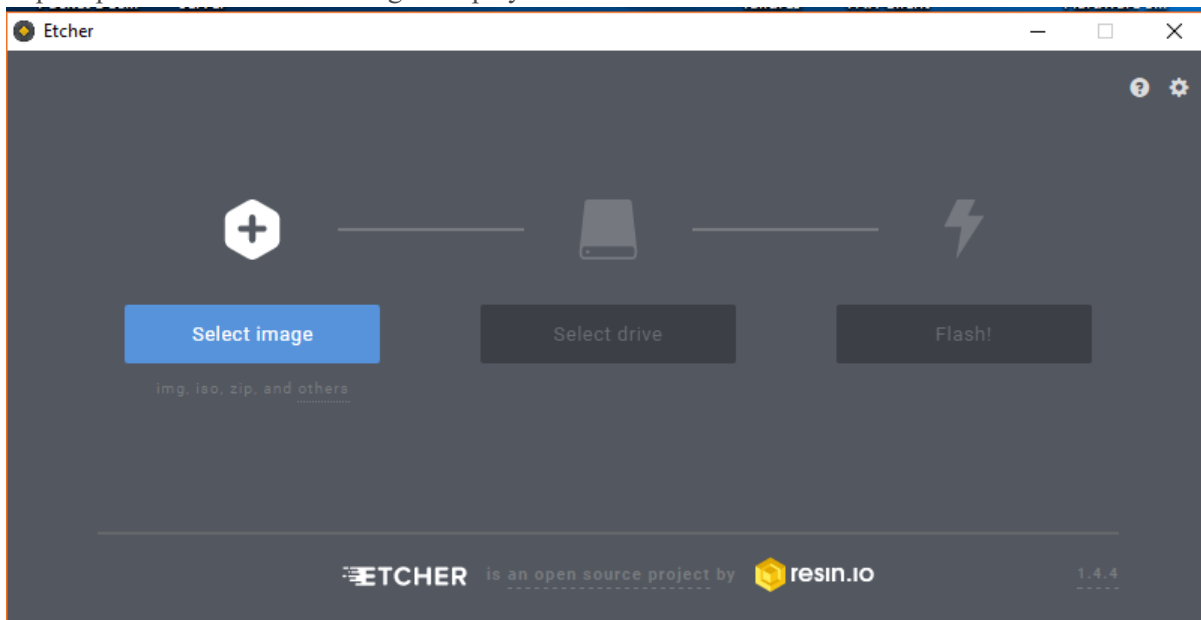
## Create a NetWitness Platform USB Build Stick

**Note:** You must use a USB drive with capacity sufficient enough to accommodate the NetWitness Platform ISO file.

These instructions tell you how to create a USB "build-stick" to load the operating system and NetWitness Platform software onto your NetWitness Platform host.

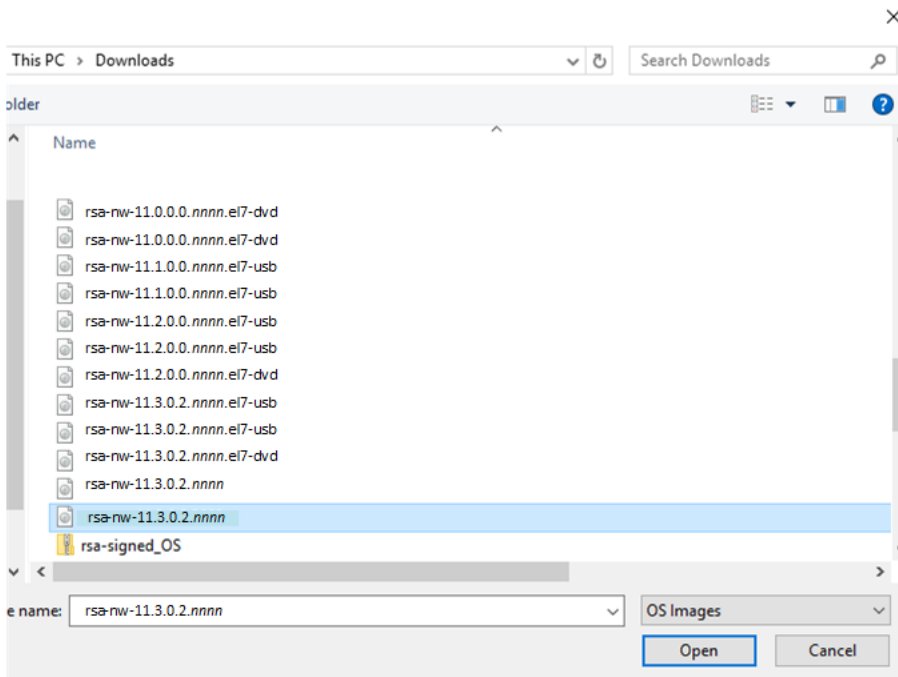
**Caution:** All existing data on the USB drive will be destroyed.

1. Download a automated tool to create the build stick onto your windows PC install it.  
You need a tool that etches an Linux file system on the USB drive to burn the NetWitness Platform ISO image on the USB drive. The ISO is unreadable in a Windows files system. Etcher is an example of a tool that will etch an Linux file system on the USB drive and Etcher is used as an example in this procedure. Etcher is available at: <https://etcher.io>.
2. Download the NetWitness Platform USB ISO image.
3. Insert the USB drive that you will use as the build stick.
4. Start the automated tool.  
A prompt similar to the following is displayed.



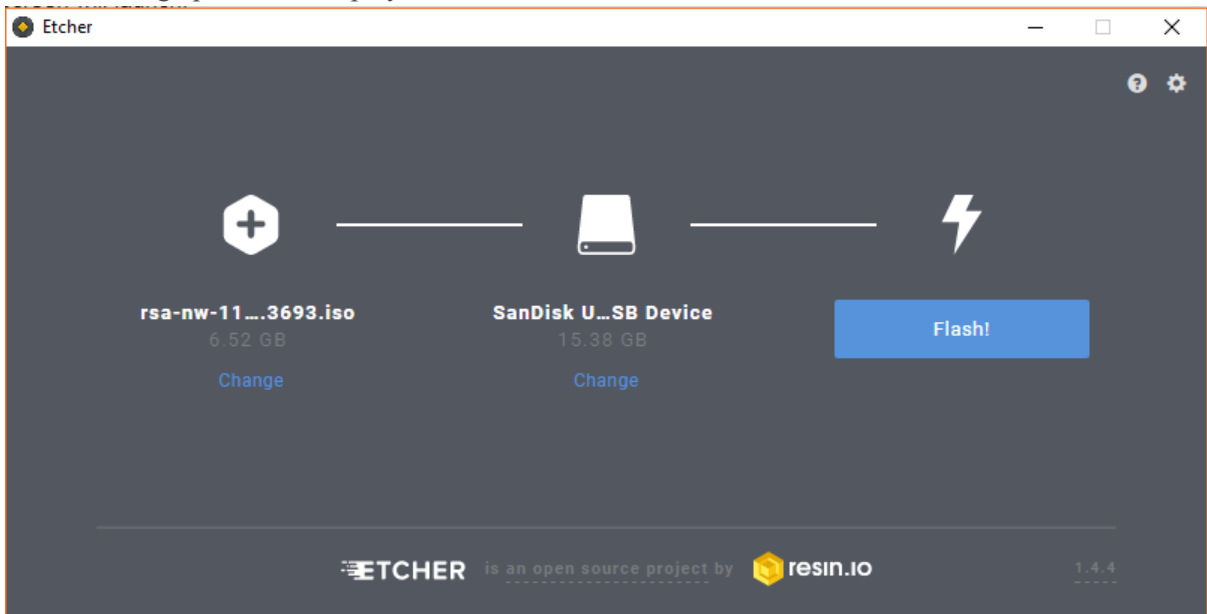
5. Click **Select Image**.

A File explorer with the available OS images similar to the following Explorer displayed.



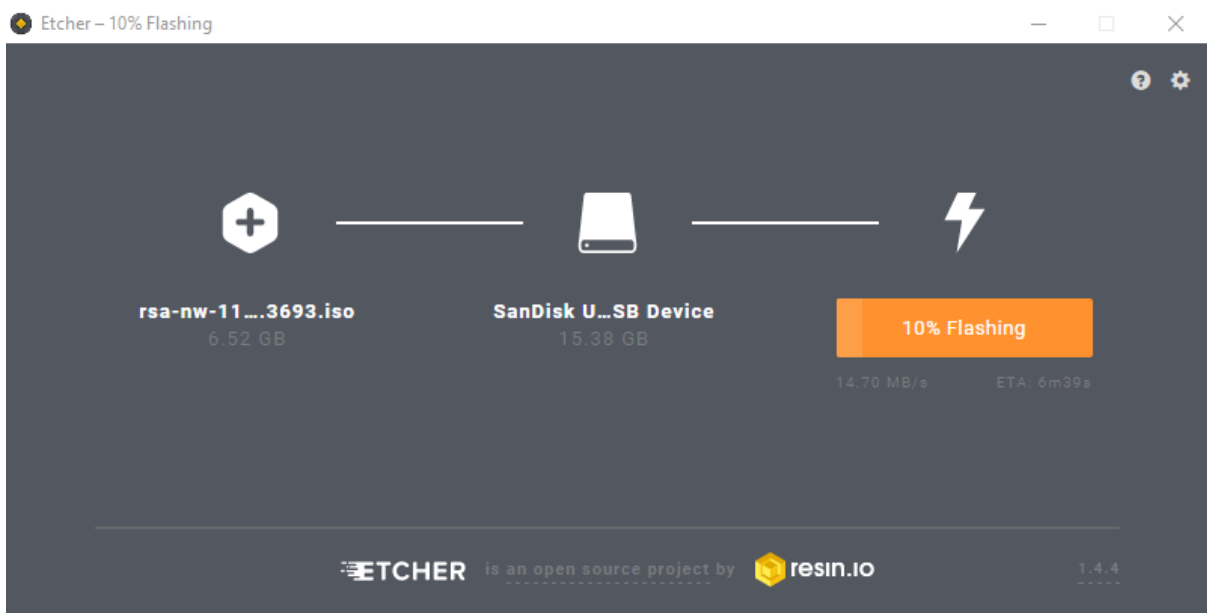
6. Select the appropriate ISO from the File explorer and click **Open**.

The following options are displayed.

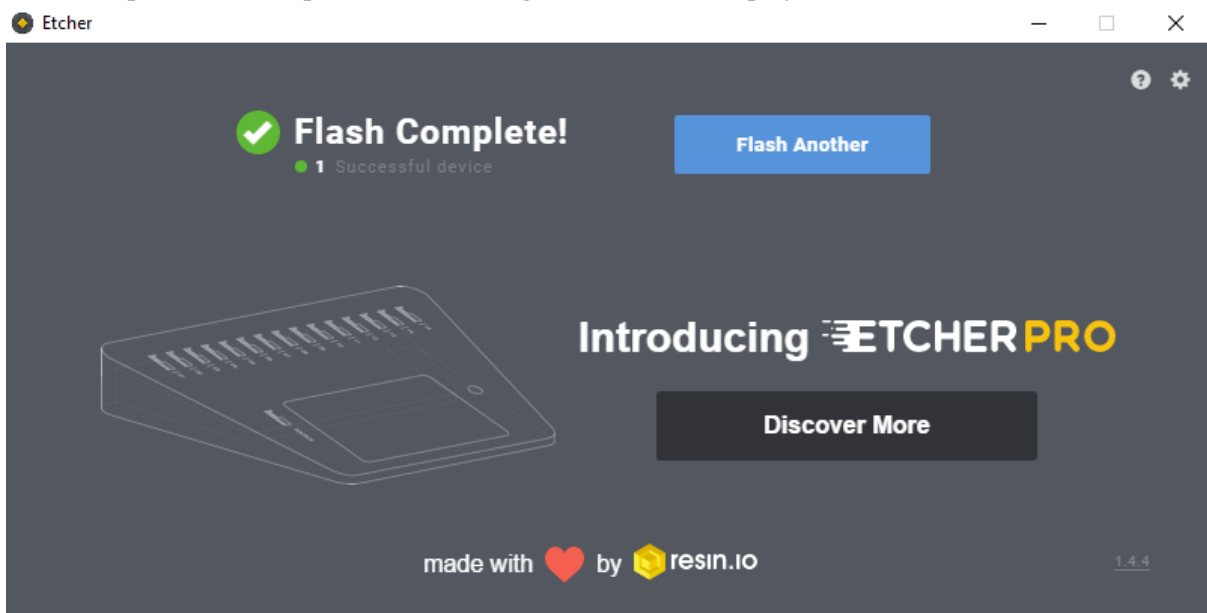


7. Click **Flash!**.

The completion progress of creating the flash drive is displayed as shown in the following example.



8. Type yes in response to any other prompts until the process completes .  
When the process is complete, the following information is displayed.



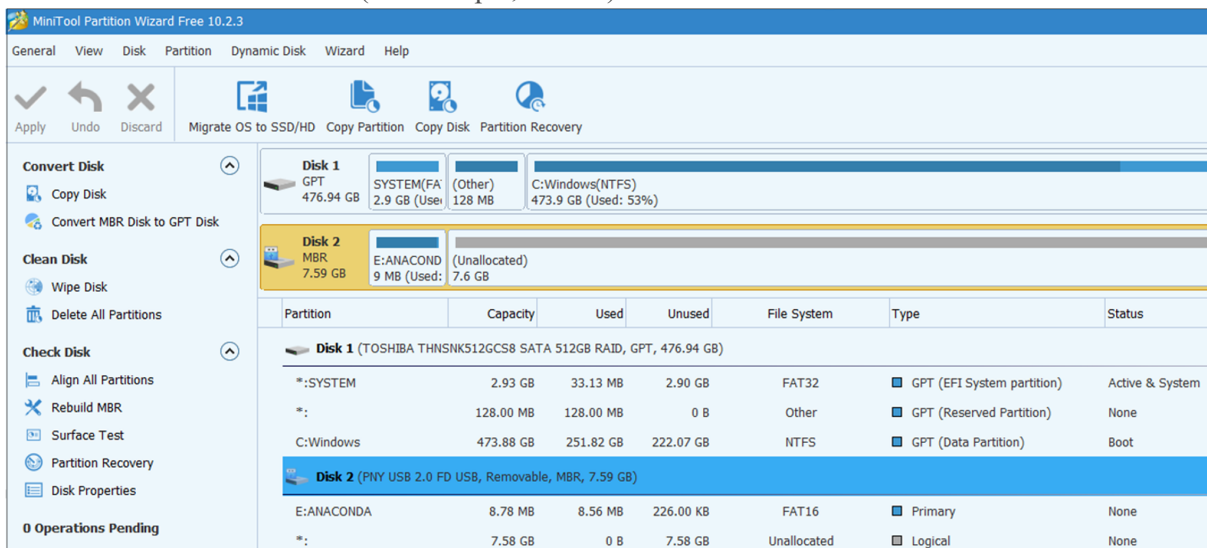
9. Close Etcher.
10. Go to My Computer, right click **USB** and click **Safely Remove or Eject**.
11. After the USB drive is ejected, unplug the USB device.  
The bootable USB is now ready.

## Reinstate Windows File System on USB Device after Creating Build Stick with Etcher

After you use Etcher to create a USB stick bootable on a host running CentOS, it becomes unusable by default on a Windows. If want to put a new ISO on this USB drive, use Etcher again to copy over the old ISO.

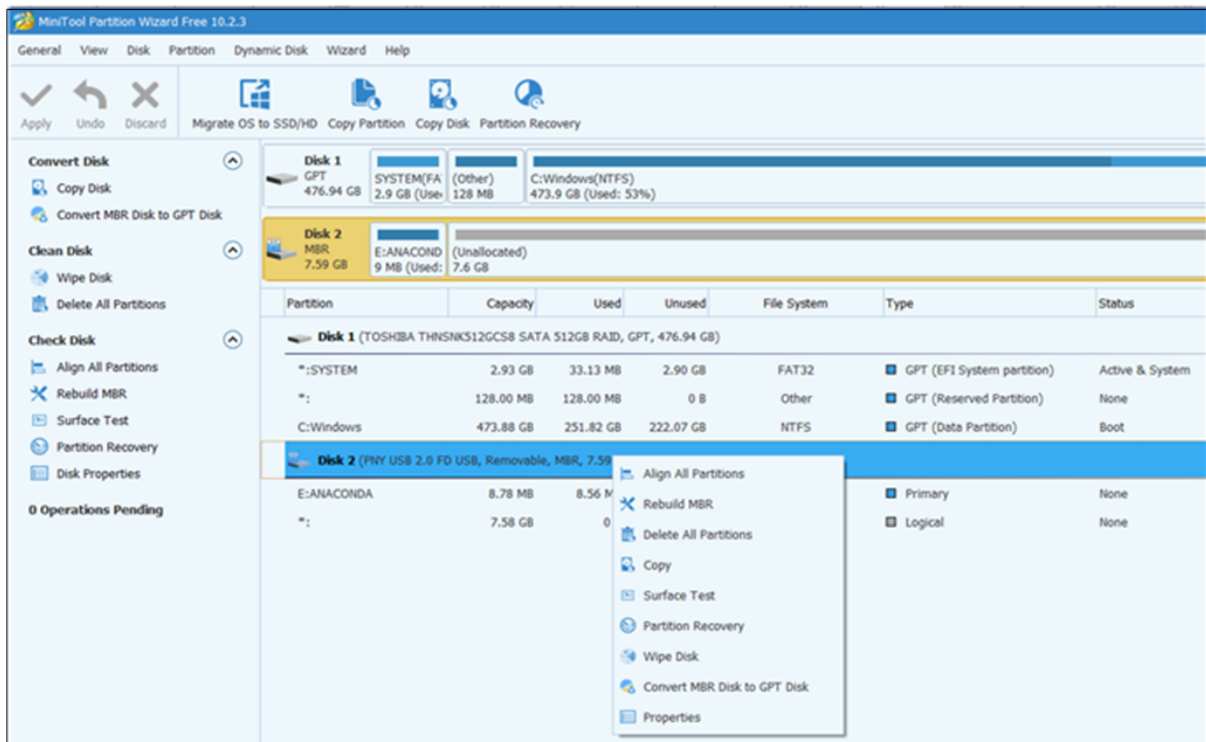
However, if you want to use the USB drive for other general storage purposes, you need to follow the following procedure to make it readable in Windows.

1. Download and install the Minitool Partition Wizard (<http://download3.minitool.com/10.2.2/pw102-free.exe>).
2. Make sure that the USB device is inserted in the correct drive.
3. Run the MiniTool Wizard.  
Your hard drive (for example, **Disk 1**) and the USB device drive (for example, **Disk 2**) are displayed.
4. Select the USB Device drive (for example, **Disk 2**).

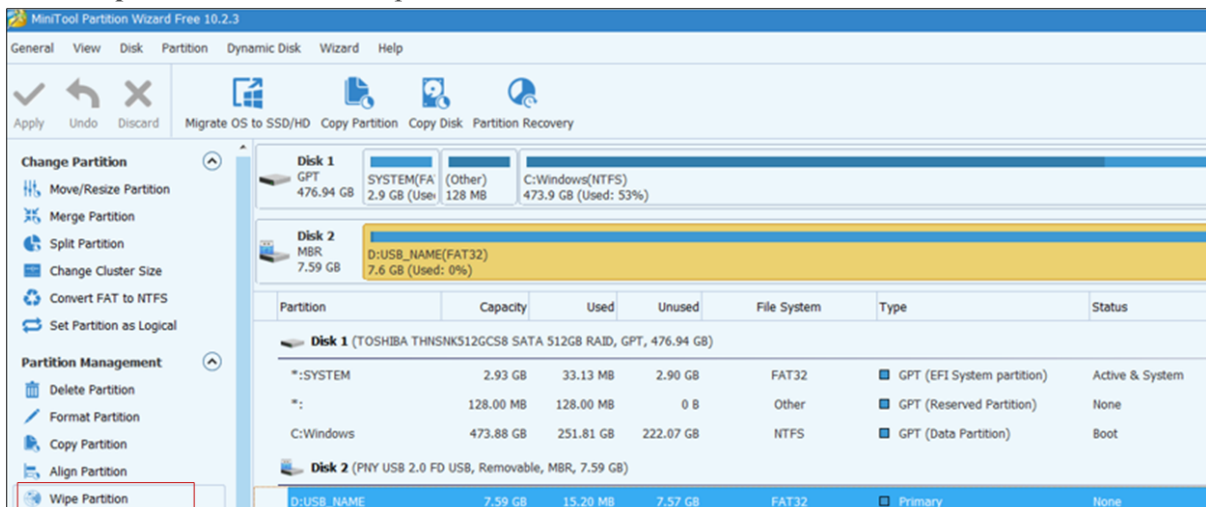




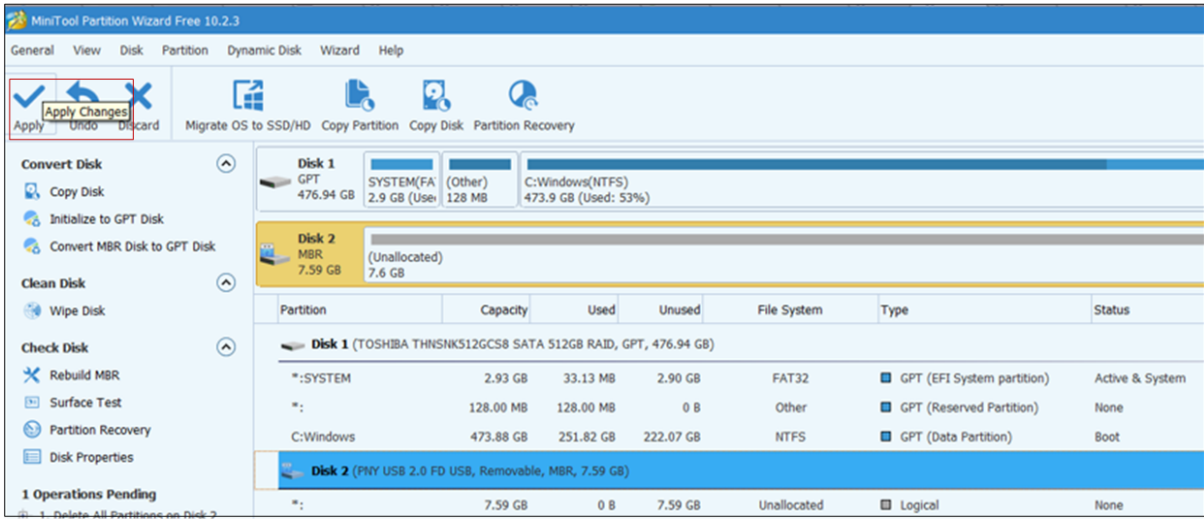
- Right click the USB Device drive (for example, **Disk 2**) displayed in the Partition detail table. The disk partitioning commands are displayed.



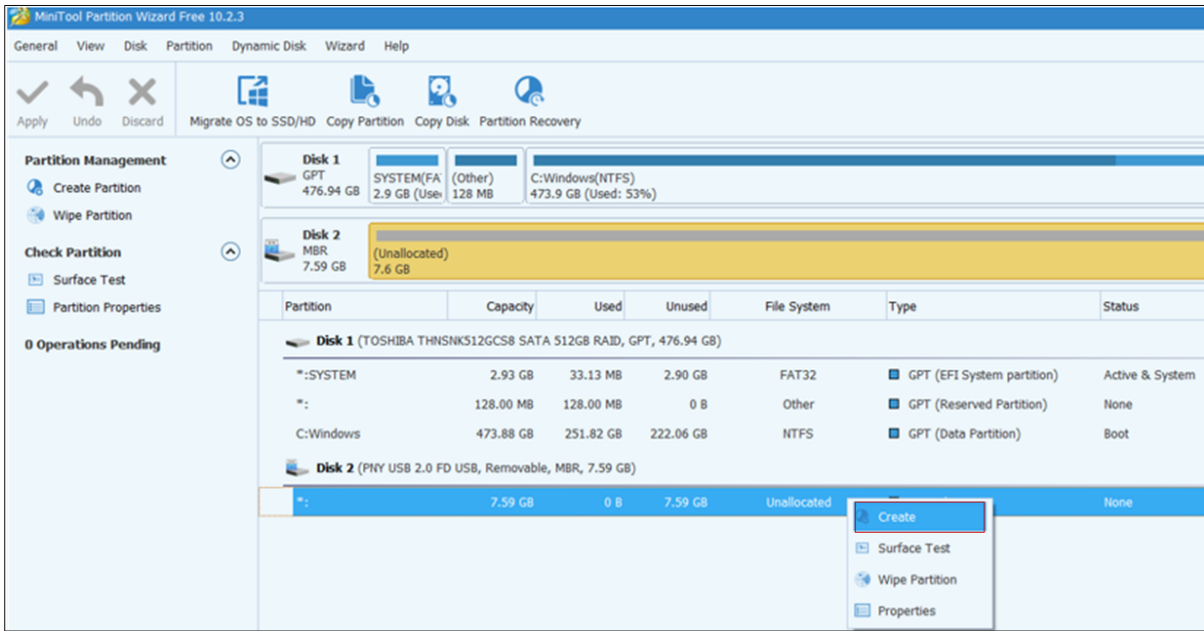
- Click **Wipe Partition** in the left panel.



- Click **Apply** in the toolbar.

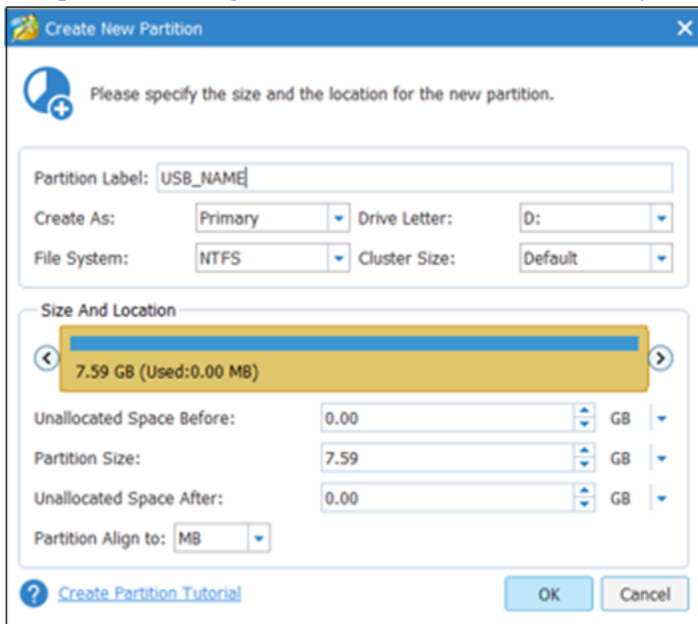


- Right click on the same disk (for example, **Disk 2**) and click **Create**.

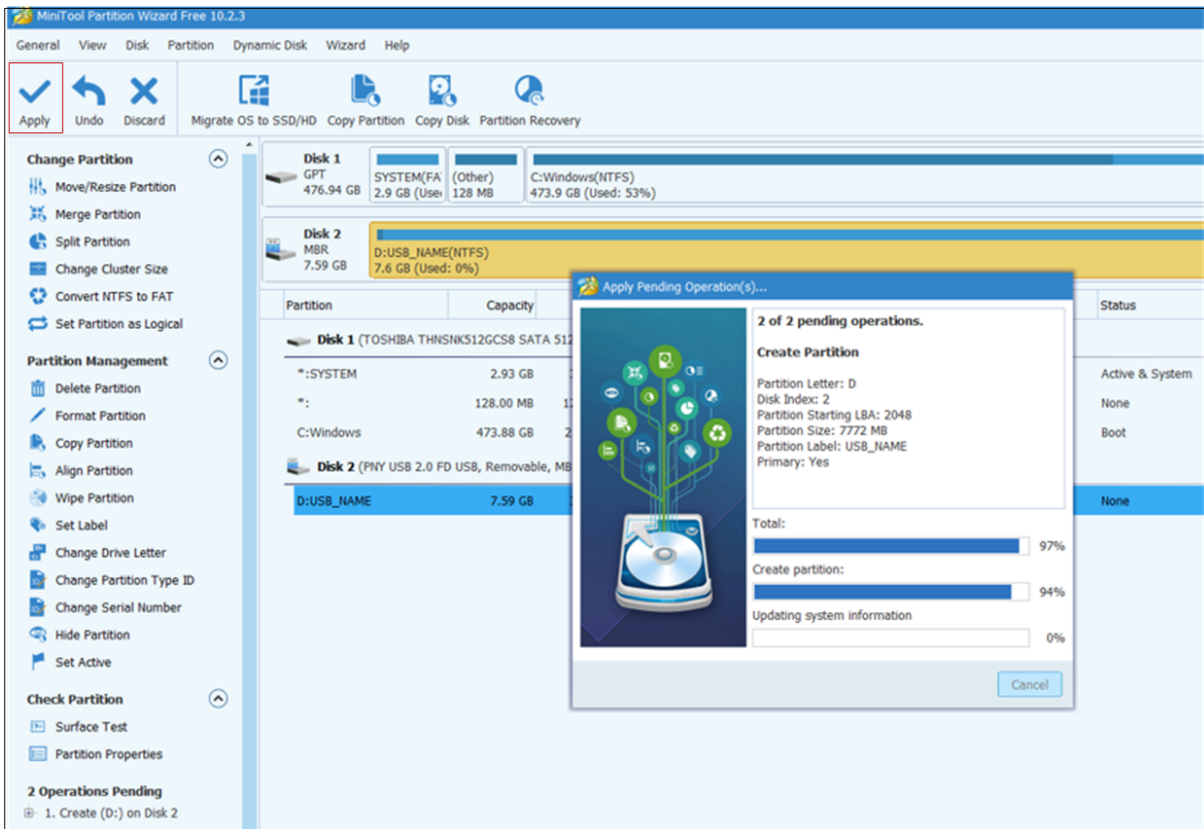


The **Create New Partition** dialog is displayed.

- Complete the dialog with the USB Drive information you want and click **OK**.



- Click **Apply** in the toolbar.  
Your USB Drive is displayed in Windows File ERplorer after the process completes.



## Revision History

---

<b>1.0</b>	<b>25-Sep-19</b>	<b>General Availability</b>	<b>IDD</b>
1.0	25-Sep-19	General Availability	IDD