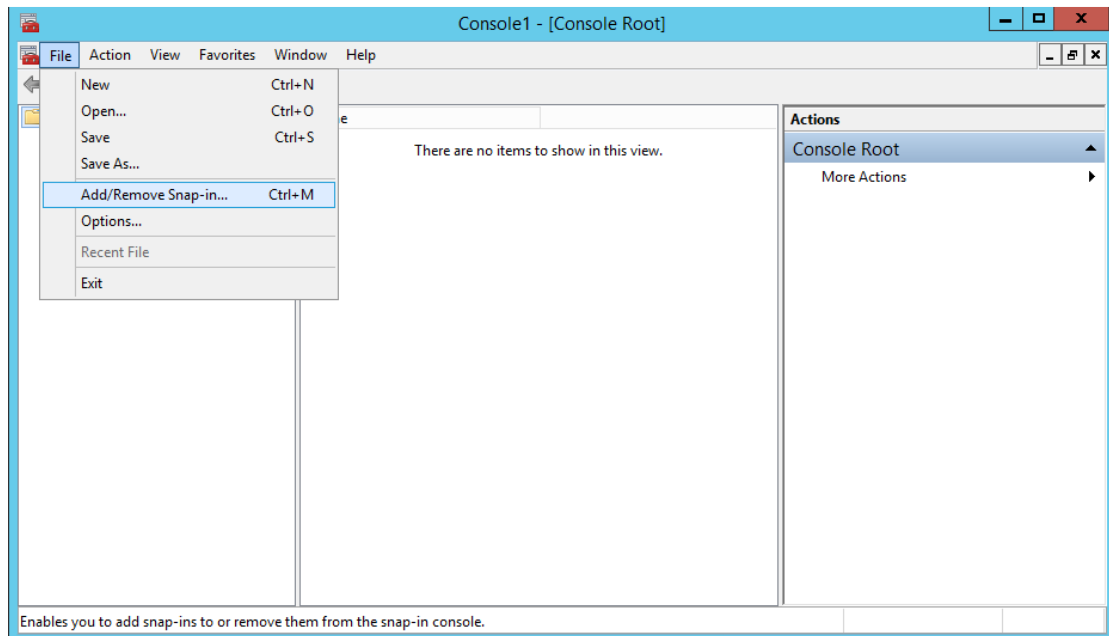


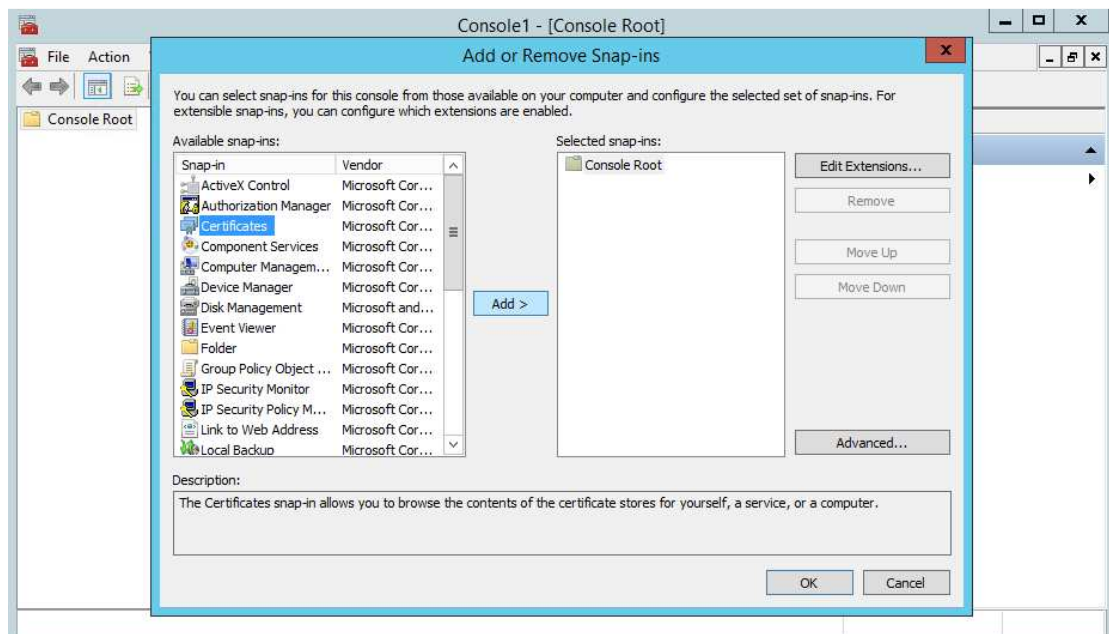
## Import Roaming Agents Relay Certificates on Console Server

The Roaming Agents Relay (RAR) client certificate (**EcatRelayClient.pfx**) and CA certificate (**EcatRelayCA.cer**) must be imported on the Console Server system in order to properly encrypt and verify communication with RAR.

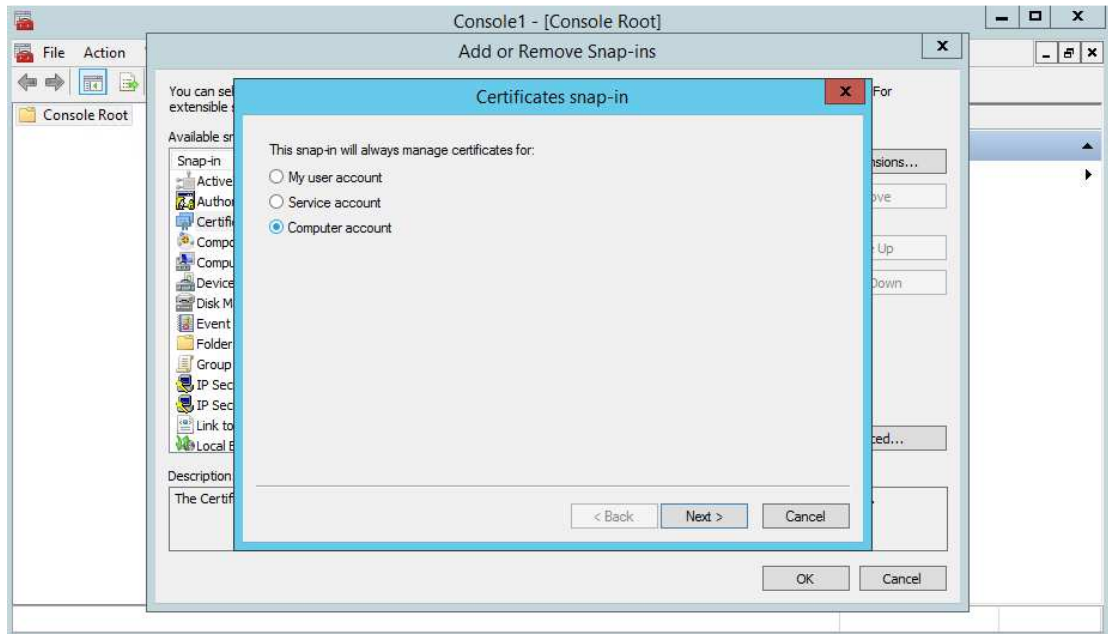
1. Certificates must be imported to the certificate store for the local machine, not the currently logged in user. To access the certificate store for the local machine, open the **Run** dialog and execute **MMC** to open the Management Console. Under the File menu select Add/Remove Snap-in.



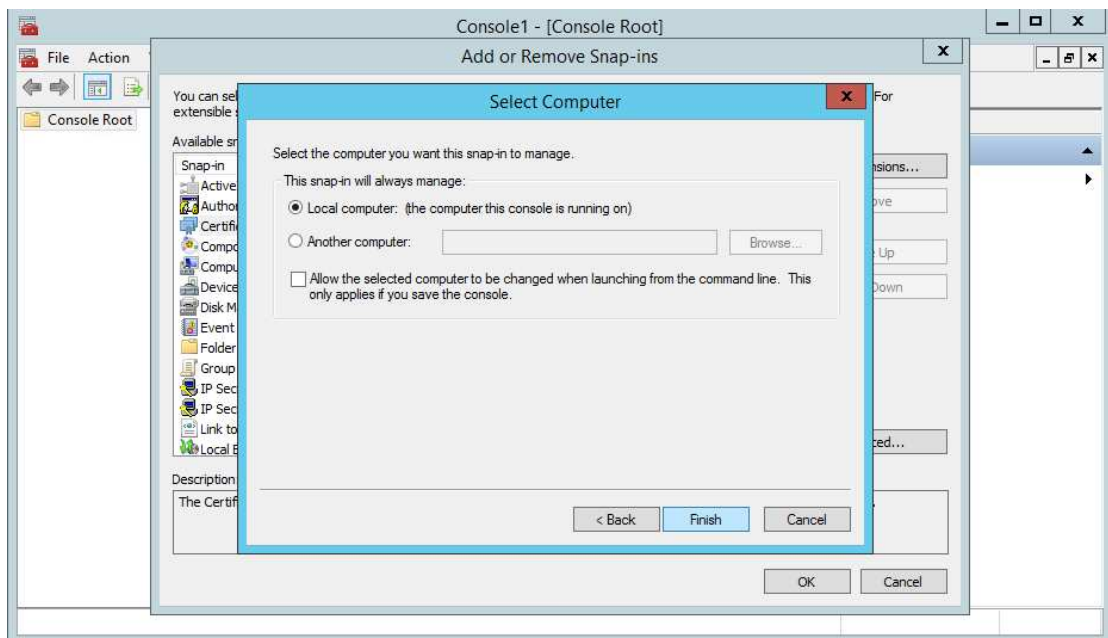
2. Select **Certificates** from the left pane and click **Add**.



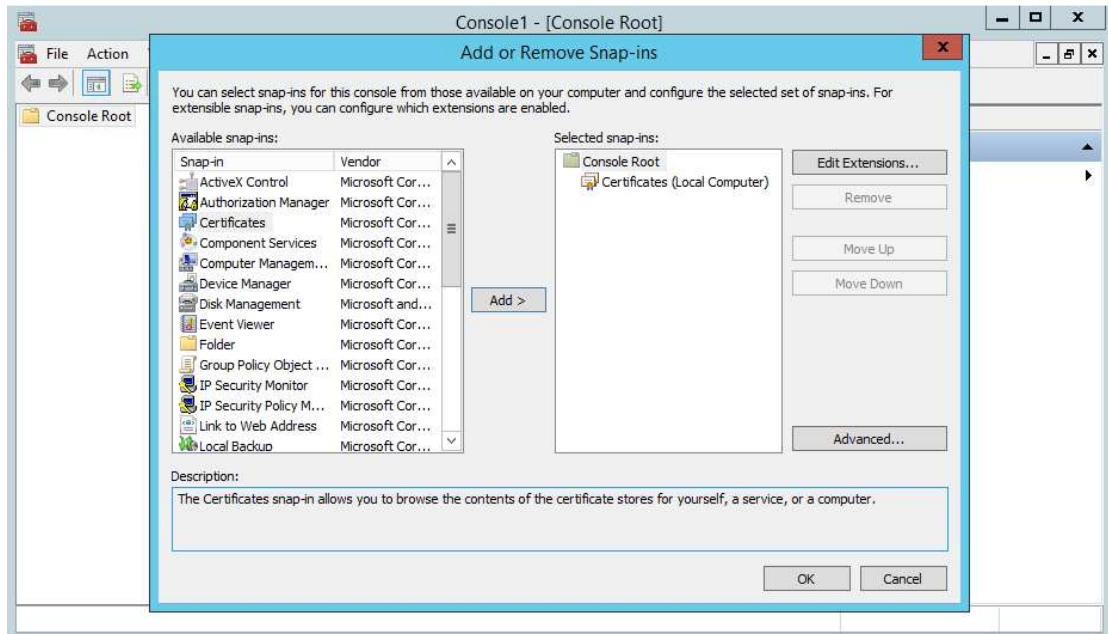
3. Choose **Computer account** and click **Next**



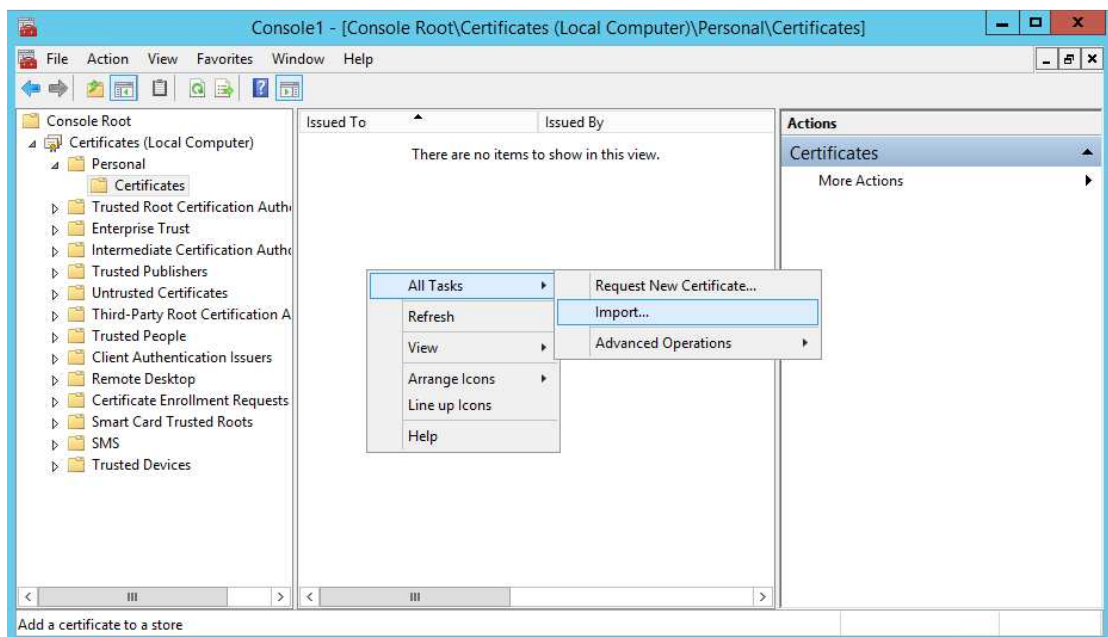
4. Choose **Local computer** and click **Finish**



5. Click **OK** to continue



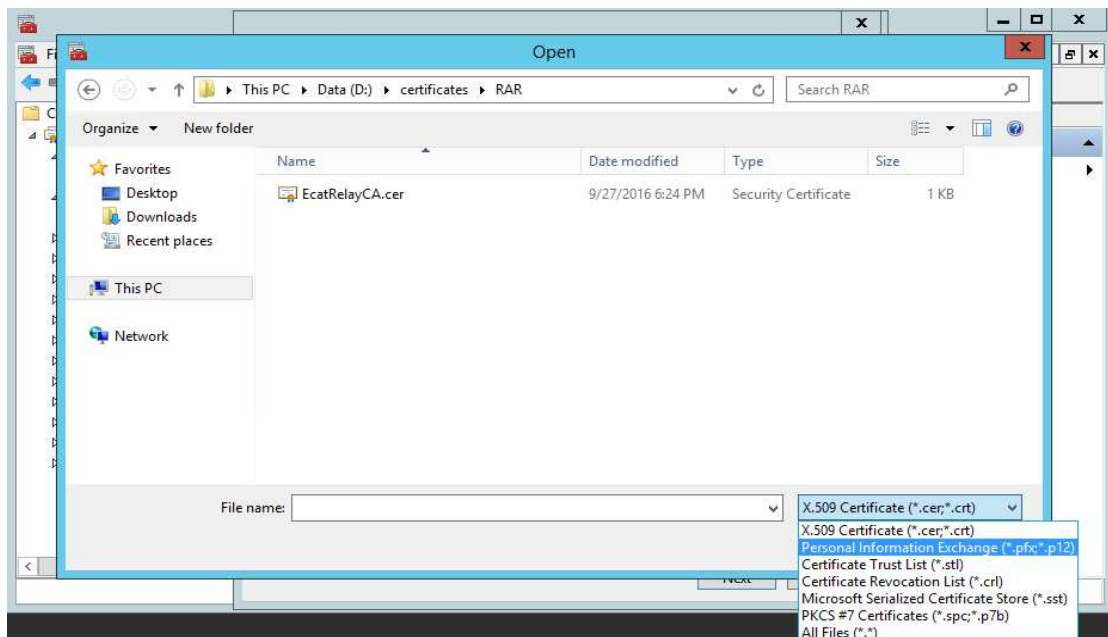
6. You will now be back at the Management Console with the Certificate Management Snap-In added. First we will import the ECAT RAR client certificate. Expand the **Certificates/Personal** Folder. Right-click on **Certificates**, select **All Tasks/Import**



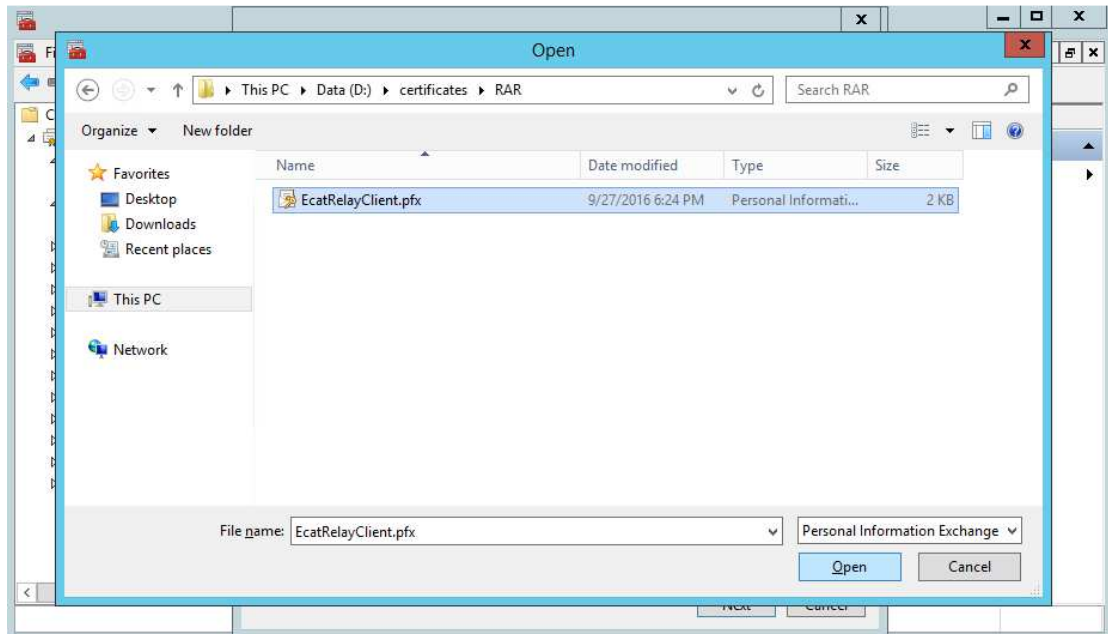
7. This will launch the certificate import wizard. Click **Next** at the first window



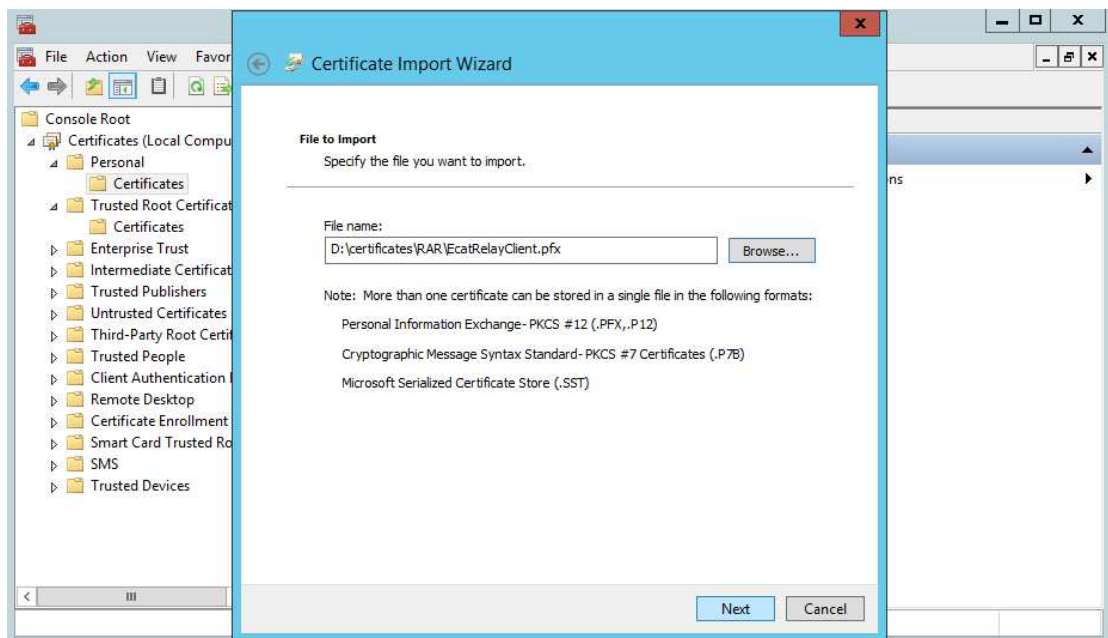
8. Change the file type to **Personal Information Exchange** and browse to the directory containing the certificates copied from the RAR server



9. Select the file **EcatRelayClient.pfx** and click **Open**



10. Preview your settings and click **Next**



11. Enter the password chosen when the certificates were initially created on the RAR server and click **Next**



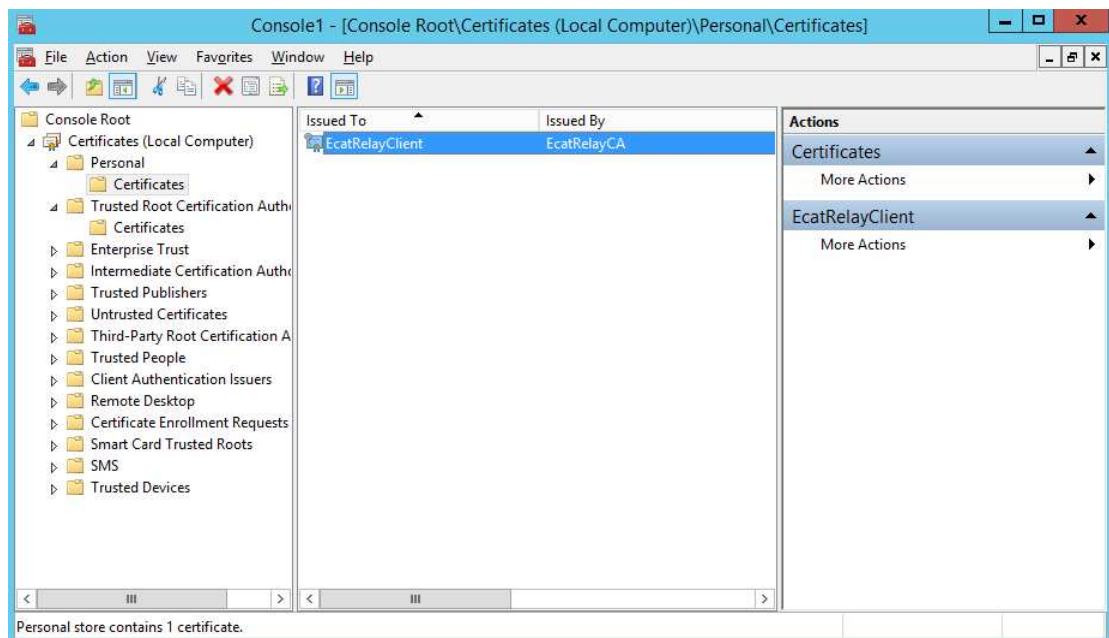
12. Ensure the certificates are being placed in the **Personal** Certificate store and click **Next**



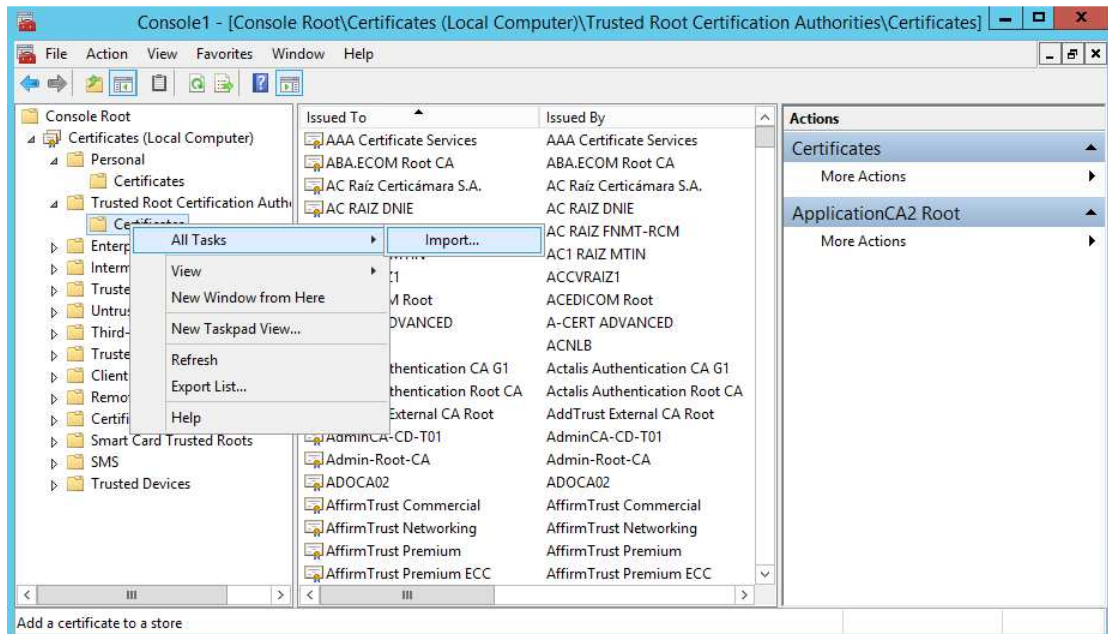
13. Preview your configuration and click **Finish**.



14. You should now see the EcatRelayClient certificate in the Personal Certificate store



15. Next the **EcatRelayCA** certificate must be added to the system. Expand the **Trusted Root Certificate Authorities** folder and right-click on **Certificates**. Select **All Tasks/Import**.

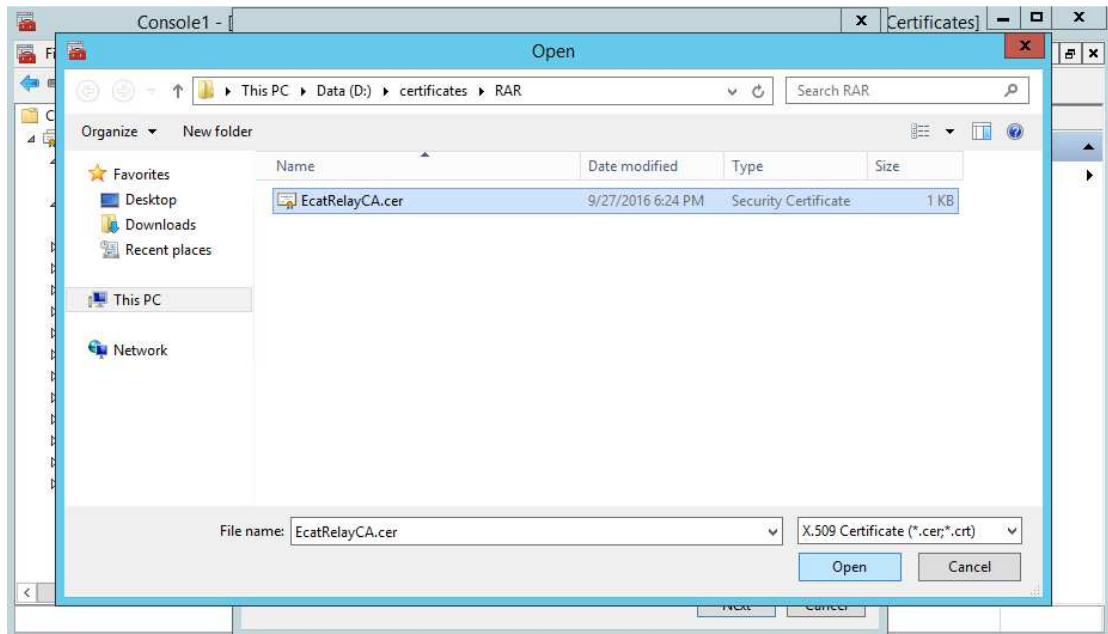


16. This will launch the certificate import wizard. Click **Next** at the first window.

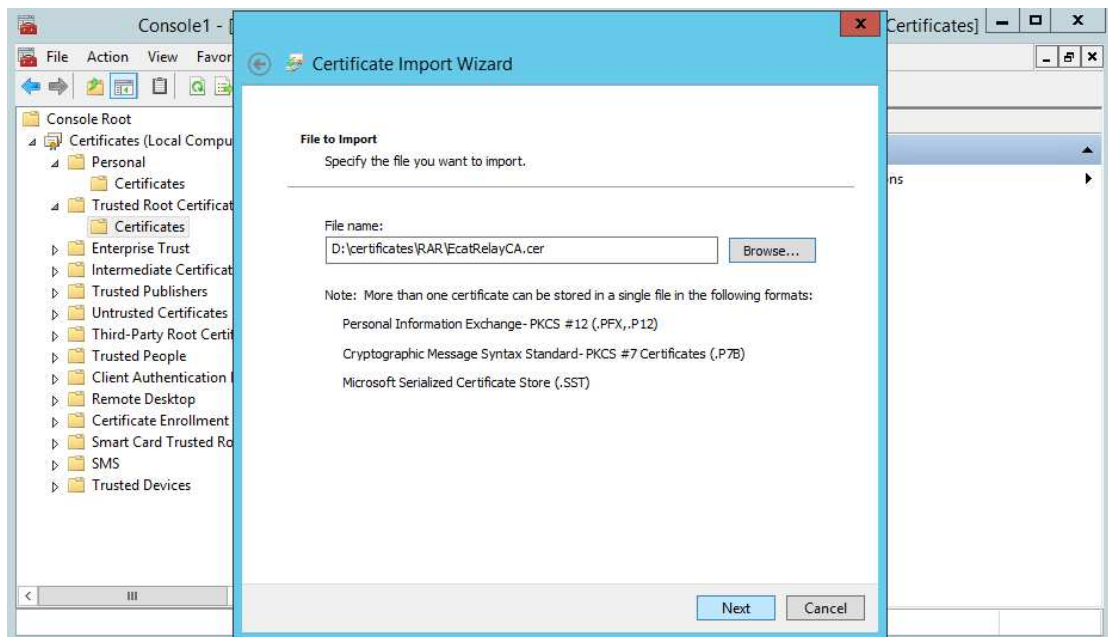




17. Browse to the directory containing the certificates copied from the RAR server. Select **EcatRelayCA.cer** and click **Open**



18. Preview your settings and click **Next**



19. Ensure the certificates are being placed in the **Trusted Root Certificate Authorities** Certificate store and click **Next**



20. Preview your configuration and click **Finish**.



21. Scroll through the list of Certificate Authority certificates and verify the **EcatRelayCA** certificate is present

